

MGS-402 Gas Detection Controller

2-Channel Controller for Refrigerant, Toxic and Combustible Gas Detection



DESCRIPTION

Bacharach's MGS-402 Gas Detection Controller centralizes the status of up to two MGS-410 Gas Detectors, provides a complete package for your safety compliance application. On the front panel of the MGS-402 a bank of LEDs corresponds to each connected gas detector; showing power, alarm status and fault indicators. The MGS-402 can provide the power requirements for up to two gas detectors, which can be daisy-chained with Modbus communication to each gas detector; simplifying and reducing the cost of installation.

Combining the MGS-402 Gas Detection Controller with Bacharach's MGS-410 Gas Detector provides a complete, single source gas detection system with an easy means of achieving compliance with refrigeration safety standards such as EN 378 and ASHRAE 15.

FEATURES

LED status indication for "at-a-glance" system / alarm status

Seamless integration with MGS-410 Gas Detector

Controller power up to two MGS-410 Gas Detectors

Modbus RTU Master / Slave provides seamless integration from connected gas detectors to many third-party BMS / BAS

Audible and visual alarms enable compliance with ASHRAE 15 / EN 378 - no additional hardware required

HOW TO CONTACT US:

US Customer Service: +1 724 334 5000

EU Customer Service: +353 1 284 6388

CAN Customer Service: +1 905 882 8985

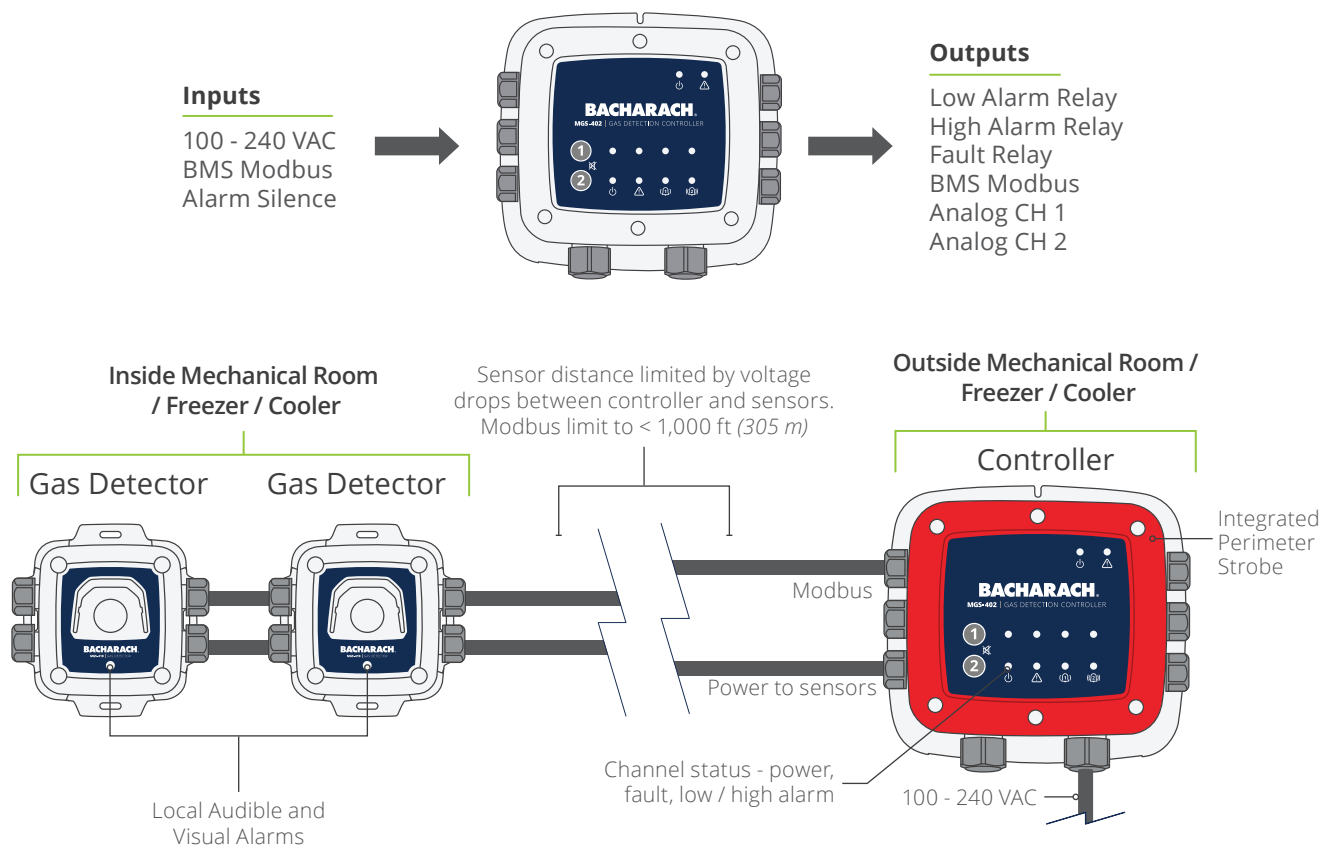
mybacharach.com

HRW Limited admin@hrw.hk www.hrw.hk

SPECIFICATIONS	DESCRIPTION
Enclosure Rating	IP66
Operating Temperature	-40 - 113°F (-40 - 50°C)
Power	100 - 240 VAC, 50/60 Hz, 20W (max); 24 VDC
Size (W×H×D) Approx.	6.5 × 6.5 × 3.4" (165 × 165 × 87mm)
Weight Approx.	1 lb, 11.07 oz (758 g)
Cable Entries	2 × M20 / 1/2" Conduit (Power), 6 × M16 Cable Glands (Communications)
Approvals	CE, UL / CSA / IEC EN 61010-1

PRODUCT DETAILS	DESCRIPTION
User Interface	Front Panel Push Buttons; DIP switches
Configurable Relays	1 × Low Alarm, 1 × High Alarm, 1 × Fault (240 VAC @ 10A)
Analog Output	2 × Configurable 4-20mA, 1-5, 2-10VDC
Alarm Silence	2 × Front Panel Push Buttons, 1 × Auxiliary Input
Serial Ports	1 × RS485 Modbus RTU Slave for BMS / BAS, 1 × RS485 Modbus RTU Master for Gas Detectors

PART NUMBERS	DESCRIPTION
6702-8020	MGS-402 Controller



Pittsburgh, PA USA | Dublin, IRE | Stanardsville, VA, USA | Toronto, CAN
 mybacharach.com | help@mybacharach.com

HRW Limited

admin@hrw.hk www.hrw.hk